

**THE ERWIN BOARD OF COMMISSIONERS
OCTOBER 2023 REGULAR WORKSHOP
MONDAY, OCTOBER 23, 2023 @ 6:00 P.M.
ERWIN MUNICIPAL BUILDING BOARDROOM**

AGENDA

1. MEETING CALLED TO ORDER

- A. Invocation
- B. Pledge of Allegiance

2. AGENDA ADJUSTMENTS /APPROVAL OF AGENDA

3. CLOSED SESSION

- A. Pursuant to General Statute 143-318.11(a) (3) for the Purpose of Preserving the Attorney-Client Privilege

4. NEW BUSINESS

- A. 100 Block N 9th Street Stormwater **(Page 2)**
- B. West K Street **(Page 7)**
- C. Public Works Equipment **(Page 8)**
- D. Erwin Police Cadet Program **(Page 43)**
- E. Shop with a First Responder **(Page 50)**
- F. Updated Resolution for NC ABC Commission **(Page 51)**
- G. BOA 2024-03 **(Page 53)**
- H. Pump Station Road Final Plat **(Page 54)**
- I. LED Signs Text Amendment **(Page 61)**
- J. Subdivision Text Amendment **(Page 63)**

5. MANAGER'S REPORT

6. GOVERNING COMMENTS

7. ADJOURNMENT

Erwin Board of Commissioners

REQUEST FOR CONSIDERATION

To: The Honorable Mayor and Board of Commissioners

From: Snow Bowden, Town Manager

Date: October 23, 2023

Subject: 100 Block N 9th Street Stormwater

We have a stormwater issue in the town-maintained right-of-way off of North 9th Street that needs to be addressed, and fixed. At the moment, we have one quote. We should have another quote by the time of this meeting.



TOWN OF ERWIN

P.O. Box 459 • Erwin, NC 28339
Ph: 910-897-5140 • Fax: 910-897-5543
www.erwin-nc.org

Mayor
Randy L. Baker
Mayor Pro Tem
Ricky W. Blackmon
Commissioners
William R. Turnage
Timothy D. Marbell
Alvester L. McKoy
David L. Nelson
Charles L. Byrd

REQUEST FOR BIDS

N 9th Street Drainage Improvements (100 Block)

August 21, 2023

The Town of Erwin is requesting Informal Bids from qualified contracting firms for drainage improvements along the 100 block of N 9th Street. Specifically, from the driveway culvert (southern-most drive accessing garage) for 501 East I Street to an existing yard inlet located on the southern side of 101 N 9th Street. The existing drainage pattern along N 9th runs to the north towards East I Street. This project will re-direct drainage along the frontage of 101 and 103 N 9th to the south and into the existing yard inlet. The revision will essentially create a high point at the 501 East I driveway that accesses the garage. Note the following pictures of the project area:



Project area showing ditch line to be re-graded and the location of the existing yard inlet.



Aerial view of the project area.



Existing yard inlet to be modified to receive the re-graded ditch line.

Scope of Work:

- Mobilization
- Traffic control
- Re-grade ditch line from culvert (garage) at 501 East I Street to existing yard inlet at 101 North 9th Street. Minimum 1% grade flowing to yard inlet.
- Lower the 2 existing driveway culverts located at 103 North 9th Street as required to match the new ditch line grades.
- Lower the existing yard inlet as required to receive the re-graded ditch flow. If lowering the yard inlet creates an unsafe condition between the inlet and the

driveway to 101 North 9th Street, a resolution will be discussed with the Town. If required, work associated with the grade between the yard inlet and the driveway will be considered additional services.

- Repair the driveways impacted by lowering of culverts to existing conditions.
- Seed and mulch the re-graded ditch line.

LUMP SUM FEE:

Contractor's Name: _____

License Number: _____

Address: _____

Phone Number: _____

Email: _____

Contractors Signature, Title and Date

END DOCUMENT



115 S. Railroad St, PO Box 899, Benson, NC 27504
WBE, WOSB, HUB Zone

Phone (919) 894-2680

Fax (919) 457-1407

Owner:	Town of Erwin
Address:	Erwin, NC
Job Name:	North 9th Street Drainage Improvements (100 Block)
Plans Date:	Per request for bid dated August 21, 2023
Revision:	
Date:	9/26/23
Attention:	Bill Dreitzler
Phone:	919-818-2235

PROPOSAL

Proposal pricing to include all labor, equipment, material, and supervision to complete the following

- Mobilization
- Traffic Control
- Re-grade ditch line from culvert (garage) at 501 East I Street to existing yard inlet at 101 North 9th Street. Minimum 1% grade flowing to yard inlet.
- Lower the 2 existing driveway culverts located at 103 North 9th Street as required to match the new ditch line grades.
- Lower the existing yard inlet as required to receive the re-graded ditch flow. If lowering the yard inlet creates an unsafe condition between the inlet and the driveway to 101 North 9th Street, a resolution will be discussed with the Town. If required, work associated with the grade between the yard inlet and the driveway will be considered additional services.
- Repair the driveways impacted by lowering culverts to existing conditions.
- Seed and mulch the regraded ditchline.

Total **\$19,240**

Exclusions/Clarifications

- Design/Engineering
- Testing
- Culvert pipes and yard inlets are assumed to be in good shape and replacement is not included.
- Permits
- Soil removal/disposal offsite and replace with off-site soil to be performed @ \$22/CY
- Soil removal/disposal offsite and replace with on-site soil to be performed @ \$16/CY
- Rock Excavation in open mass to be performed @ \$60/CY
- Rock Excavation in trenches to be performed @ \$85/CY
- Undercut and backfill unsuitable soils with ABC to be performed @ \$34/CY
- Stone for stabilization \$40/Ton
- Process fill if needed @ \$15/CY
- Bonds-Fees-Meters
- Relocation of existing utilities
- All work to be performed during normal business hours
- Any and all items not stated above

Erwin Board of Commissioners

REQUEST FOR CONSIDERATION

To: The Honorable Mayor and Board of Commissioners

From: Snow Bowden, Town Manager

Date: October 23, 2023

Subject: West K Street

Our Town Engineer Bill Dreitzler will speak briefly with an update on the West K Street project.

Erwin Board of Commissioners

REQUEST FOR CONSIDERATION

To: The Honorable Mayor and Board of Commissioners

From: Snow Bowden, Town Manager

Date: October 23, 2023

Subject: Erwin Public Works Equipment

The Erwin Public Works Department is tasked with the responsibility of trimming branches that are in the right-of-way on all of our Town-maintained roads. They recently had to borrow a piece of equipment that allowed them to clean up vegetation that was overgrown in the public right-of-way on a road that has been mostly undeveloped for a number of years. Town Staff would like to request funds to purchase a piece of equipment that will allow us to do a better job of maintaining the shoulders of our existing Town-maintained roads. We could also use this piece of equipment on the Dunn-Erwin Rail Trail, Al Woodall Park, and Porter Park. We are currently looking at two different options. We had a demo of one piece of equipment (Trackless MT7) on Wednesday, October 18th. We have a demo of the mowermax the week of this workshop meeting.

- Trackless MT7- \$156,012
 - 74' front flail mower: \$11,400
 - Total: \$167,412
- Mowermax- \$265,591.00

Both quotes would be considered a state contract price. Both pieces of equipment have attachments that we could get down the road that would be beneficial. After seeing the Trackless MT7 in person we could potentially use this with the proper attachment to mow grass in the ROW. We believe that this would be a more efficient way to mow grass in the ROW compared to our current option. I would assume that the mowermax would be the same but we will know once we test-drive it.

At the moment, we are pretty happy with the Trackless MT7. We want to see the mowermax in person to see if it is worth the cost. If we want to move forward with a purchase, we would need to approve a budget amendment. We could use funds from the general fund.

Attachments:

- MT7 quote
- Mowermax quote

T *rackless* VEHICLES

SUBSIDIARY OF FEDERAL SIGNAL CORPORATION



SERIES 7 MUNICIPAL TRACTOR

ADVANCED DESIGN FOR MAXIMUM
PRODUCTIVITY, SAFETY AND COMFORT
FROM THE LEADER IN THE MUNICIPAL TRACTOR FIELD

SERIES 7

Trackless Vehicles has been in the articulated tractor manufacturing industry for over 50 years. Trackless leads the market in technological design, efficiencies, safety features, operator comfort and overall performance. While less expensive competitive products are available, the many value-added and safety features of the MT7 are primarily due to feedback and requests from our large customer base.

The majority of our business is with municipalities and their public works departments. However, we have also equipped parks, airports, universities, military facilities, private contractors and large corporations with equipment to help them tackle their toughest seasonal grounds maintenance challenges.

The MT7 is what you, the customer, should expect; a tractor appropriately designed to do the job safely and efficiently. Our commitment is to be the best and deliver the products you need to get the job done.

INDUSTRY LEADING SUPPORT

Visit Municipal Tractor University, a free online platform designed exclusively for Trackless owners and operators. On MTU, you'll find video tutorials, parts catalogues, manuals, diagnostic information and more! Also accessible by scanning the QR code inside the cab of every MT7.

Learn more about MTU and take advantage of this service solution today by visiting:

TRACKLESSVEHICLES.COM/MTU



PTO WORK MODE/ STANDARD MODE

PTO Work Mode allows an operator to set the engine at full RPM to power PTO-driven attachments such as a snowblower or any of our mowers and control ground speed independently by way of the hydrostatic foot pedal.

Flip the switch to Standard Mode, and the tractor drives like a car. The pedal now controls both the ground speed and engine RPM simultaneously. Standard Mode saves a significant amount of fuel as the engine RPM returns to idle when letting off the pedal vs constant full RPM when in Work Mode. Standard mode is ideal for plowing, sanding, other operations that do not require PTO power, and transporting to and from where work is to be done.

RIDE CONTROL (OPTION)

Automatically senses ground speed and the overhung load of the attachment to calculate shock load and cancel out tractor bounce.

AC/CLIMATE CONTROL

Full climate control for floor heat and defrost with fresh air intake. Set desired temperature on the digital display, choose fan speed, and the temperature will remain constant. Air is dried in defrost mode to prevent fogging.



TRACKLESS MT7: PACKED WITH FEATURES

REVERSING ENGINE FAN

The automatic reversing engine fan comes standard. By reversing at factory set intervals, the fan keeps the radiator and hydraulic oil cooler clean from grass clippings in the summer and salt build-up in the winter.

ONBOARD DIAGNOSTICS

The onboard computer checks and monitors all systems. If a fault is detected, the user can access tractor diagnostics through the digital dash.

WIFI DIAGNOSTICS (OPTION)

The WiFi Diagnostics feature allows our diagnostics team to connect directly into all MT7 ECUs, including the engine ECU. This option reduces downtime and service calls should there be a problem or concern.

JOHN DEERE STAGE 5 ENGINE

A 74 HP John Deere 4.5 LT Stage 5 diesel engine powers the MT7, rather than a smaller 2.6 to 3.6 LT engine. We chose the larger displacement engine for its robust characteristics and longer engine life. MT7 owners or anyone who has seen a demonstration are impressed with the engine's performance.



EXTERNAL UP/DOWN SWITCH

The conveniently positioned external up/down switch on the front of the tractor provides for single operator pinning of attachments. This feature reduces the risk of injury, which could occur from a second individual operating controls inside the cab and unable to see the hands of the individual pinning the attachment. When using the switch, hydraulic cylinders move at a third of the regular speed, providing precise and safe control for aligning the pins.



REAR PTO & REAR 3-POINT HITCH (OPTION)

The MT7 has an optional rear 540 RPM PTO and category one 3-point hitch, allowing for the installation of an attachment on the rear of the tractor.



DIGITAL DASH

The digital dash displays all relevant tractor information, including fluid temperatures, speedometer, engine RPM, fuel level, selected gear range, forward/neutral/reverse, turn signals, and more.

The digital dash illustrates a variety of information by way of icons. In addition to the icons, when a fault occurs, such as low coolant, low hydraulic oil or plugged air breather, a message in 3/4-inch text will appear on the screen. These messages eliminate the risk of an operator failing to notice a fault light icon and help to clarify the fault.



BACKUP CAMERA

The backup camera is viewed on the 7" digital dash and is a standard feature.



RIGHT SIDE SWITCH PANEL

The user-friendly switch panel is located to the right of the joystick. Tractor functions such as cruise control, engine RPM, hydraulics, PTO, sander, joystick modes and air ride seat are all at the operator's fingertips.

DESIGNED FOR MAXIMUM PRODUCTIVITY

JOYSTICK

A state-of-the-art joystick controls attachment functions. The joystick is easy to use and extremely smooth. Select from the list of attachment modes A, B or C, position the joystick mode switch accordingly, and the joystick automatically programs itself for the attachment you have installed. Manually re-configuring the joystick is never required. With the operator's hand resting comfortably on the joystick, all attachment functions, as well as switching between forward and reverse, couldn't be easier or more comfortable.

WINTER ATTACHMENTS

SNOWBLOWERS

TWIN AUGER SNOWBLOWER

The Twin Auger Snowblower is a highly efficient, two-stage snowblower.

It is available in three widths: 51", 60" and 70". All widths will accept either a sidewalk or a truck-loading chute, and many municipalities utilize both chutes with their snowblower. After clearing sidewalks, municipalities can change to the truck-loading chute to remove windrowed snow from streets or cul-de-sacs. In both cases, the manoeuvrability and physical size of the MT and Snowblower are less apt to create traffic congestion than larger snowblowers.

Overall durable construction includes 3/8-inch thick side plates, double-wall impeller housing and a 15-inch diameter bearing assembly for smooth, accurate chute rotation. In addition, high-strength, low alloy steel augers with ice picks and a heavy-duty balanced impeller can easily handle the most challenging snow conditions.

Average loading time for the MT and Snowblower is seven cubic yards per minute.



Positive and accurate steering of the Snowblower in confined areas and around obstructions is due to the articulated steering of the MT. The ability to move the Snowblower sideways by simply turning the steering wheel allows the operator to approach any obstruction safely.

The Twin Auger Snowblowers are manufactured by Trackless Vehicles to ensure that the quality, service, and parts availability are equal to that of the MT.



RIBBON SNOWBLOWER

The Ribbon Snowblower is the next generation of snowblower technology from Trackless Vehicles. Designed for higher output, this Snowblower outperforms all others in heavy snow conditions. In addition, it is highly aggressive when cutting into frozen snow.

The Ribbon Snowblower can accept either a sidewalk chute, truck-loading chute, or telescopic chute. Depending on the job at hand, an operator can quickly change from the sidewalk chute to the truck-loading chute to load snow from the street into an awaiting truck.

Available widths: 51", 60" and 75". Contact Sales for 84" width.



TELESCOPIC CHUTE

The telescopic chute provides the best of both worlds, allowing the operator to change the height of the chute from within the cab of the Trackless MT.

The telescopic truck-loading chute is available as an option for the 51", 60", 70", 75" and 84" widths.





5-POSITION FOLDING V-PLOW

The 5-Position Folding V-Plow allows you to build flexibility into your sidewalk maintenance program. This attachment offers the ability to choose between the simplicity of a straight blade, the speed of a V-Plow, the manoeuvrability of a scoop plow, or any configuration in between.

The left and right wings are controlled by individual hydraulic circuits via the joystick, allowing you to change your blade configuration as plowing conditions change. With the push of a button, both wings can be moved simultaneously.



PLOW TRIPPING

The 5-Position Folding V-Plow is designed to be able to trip while in the straight blade position.



ANGLE SNOWPLOW

The Angle Snowplow is the most cost-efficient snow moving attachment you can mount on your Trackless MT. Nothing beats the economic performance and durability of a straight blade. However, we took the simplicity of a straight blade and made it better; blade skins are made from 3/16-inch hot-rolled steel and reinforced with 3/8-inch thick steel ribs for optimum durability.

The Plow is available in four widths: 5', 6', 7' and 8'.



DOUBLE TRIP PLOW

The design of the Double Trip Plow provides safer operation on uneven sidewalk surfaces. The double trip system trips the mouldboard 35° and the cutting edge 40°. With this type of trip system, the operator is not required to stop or slow down for the mouldboard and cutting edge to return to position. The tripping of the Plow is also smoother than conventional mouldboard trip or cutting-edge trip plows.

Available in 60" width.



FIXED WING V-PLOW

The Trackless Fixed Wing V-Plow is designed for high-speed plowing. The V-Plow has excellent snow rolling and throwing capabilities that allow it to effortlessly cut through drifting or accumulated snow. The tapered nose allows it to ride safely over uneven surfaces without damaging the Plow or the sidewalk.

Available in 49" width.



FRONT MOUNT SPREADER AND PLOW

The Front Mount Spreader and Plow is a unique combination of a 5' angle plow and sidewalk spreader attached to the front of the Trackless MT.

When coupled with the Rear Mount Sidewalk Spreader, operators can increase spread distance by filling both spreaders with the same material. Alternatively, the spreaders can be filled with two different materials for area-specific applications.

REAR MOUNT SIDEWALK SPREADER

The Rear Mount Sidewalk Spreader was specifically engineered for sidewalk applications. The capacity of the Rear Mount Sidewalk Spreader is ½ cubic yard, providing a spread distance of 4 to 12 km (3 to 8 miles).

As illustrated, the Spreader conserves material by dispersing it evenly in a diamond pattern rather than a solid layer. The delivery roller maintains a 41" spread width, preventing material waste and turf damage from salt, both of which can be a problem with spinner spreaders. As a result, reduced labour and material requirements minimize the overall cost of operation.

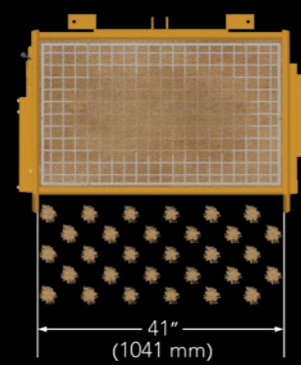
An in-cab switch allows the operator to choose between Auto Mode or Run Mode. Auto Mode automatically stops the Spreader from spreading whenever the tractor stops or is shifted into reverse. Run Mode allows the Spreader to run constantly. A 10-position rotary switch in the right side switch panel allows the operator to increase/decrease the amount of material being spread.

For safety, the Spreader comes equipped with a safety screen, a slow-moving vehicle sign and 3 screw-jack stands that allow one person to safely attach or remove the Spreader from the tractor without the aid of a lifting device.

As an option for the Spreader, the MT7 can be equipped with a ground speed-regulated controller.



DIAMOND SPREAD PATTERN



DUMP BODY

The Trackless Dump Body is an option for municipalities wishing to double their Rear Mount Sidewalk Spreader's spread distance.

The operator spreads material until the Rear Mount Sidewalk Spreader is empty and can then refill the Spreader by hydraulically raising the Dump Body. The tailgate opens automatically and closes again once the Dump Body is lowered back into the rest position. For safety purposes, the tractor will not drive forward or reverse while the Dump Body is in the raised position.

When the winter season is over, the Dump Body and its supporting frame can be unbolted and stored until the following winter.

Additionally, the Dump Body is used to house the 150-gallon Water Tank attachment.



TOW BEHIND SPREADER

The Tow Behind Spreader has a 1 cubic yard capacity with a spread distance of up to 18 km (11 miles). It is hydraulically driven and has an electric actuator to control the spread distance. The actuator control is located in the cab next to the joystick.

The Tow Behind Spreader conserves material by dispersing it evenly in a diamond pattern rather than a solid layer. The delivery roller maintains a 41" spread width; this prevents material waste and turf damage from salt. As a result, reduced labour and material requirements minimize the overall cost of operation.

For added safety, the Tow Behind Spreader is equipped with electric brakes.

150-GALLON BRINE SPRAYER

The 150-gallon Brine Sprayer can be used in conjunction with front-mounted attachments, such as a Snowblower, Plow, Power Angle Sweeper or Snow Lion Ice-Breaker.

The Trackless Brine Sprayer can be utilized for anti-icing, deicing or pre-wetting, and was specifically designed for the application of salt brine. Liquid brine is ideal for use in downtown core areas to limit material being tracked into stores and buildings.



80-GALLON BRINE SPRAYER

The 80-gallon Brine Sprayer is designed specifically for liquid salt brine application.

The application of brine prevents the bond of snow and ice from freezing to the sidewalk. The use of brine spraying systems to deice sidewalks and other surfaces reduces material and labour costs.



SNOW LION ICE-BREAKER

The Trackless Snow Lion Ice-Breaker is designed to pulverize ice and hard-packed snow that can build up on sidewalks and walkway surfaces over time. The prevention of potential slip and falls is a significant concern for all municipalities, and the Ice-Breaker attachment was explicitly designed for this purpose.

The Ice-Breaker can operate regardless of temperature or climate and can provide effective ice control in temperatures that may render deicing agents ineffective. The Ice-Breaker features a double pulverizing roller system, which provides two passes in one.



INDEPENDENT ROLLER SUSPENSION

Each cutter on the Ice-Breaker attachment is mounted with a spring-loaded suspension. This allows the cutters to follow uneven surfaces such as curbs.



SPRING ATTACHMENTS

ROTARY FINISHING MOWERS



14' ROTARY FINISHING MOWER

The 14' Rotary Finishing Mower was designed to drastically reduce mowing time in large areas such as campuses and parks.

The three-section, front-mounted Mower provides the flexibility required to avoid scalping on undulating ground. The Mower's 72" main deck is powered by the tractor's PTO, while the two hinged 48" wings are powered independently by the tractor's hydraulics.

Safety switches shut off the wings automatically when raised.

The Mower's cutting height ranges from 1½" to 4" and can be adjusted in ½" increments.

For side slope cutting, axle extensions and Terra Grip Turf tires are available.



72" ROTARY FINISHING MOWER

The Trackless 72" Rotary Finishing Mower is designed for close trimming with a full-width rear discharge. Four large gauge wheels and a flexible attaching frame allow accurate cutting on rolling ground.

The MT's hydrostatic transmission allows the operator to maintain the optimum cutting speed in various conditions.



10' ROTARY FINISHING MOWER

The 10' Rotary Finishing Mower is a mid-sized mower option for customers looking to mow large areas without compromising manoeuvrability. Operators are able to easily manoeuvre around obstacles such as signs, flower beds and trees with the 10' Mower.

The Mower is comprised of three sections: a 72" main mower deck and two 24" mower wings. For safety, the 10' Rotary Finishing Mower is equipped with safety switches that shut off the wings automatically when raised.



SPRAY ARM WATERING HEAD

The Spray Arm's watering head was primarily designed to water hanging flower baskets. However, the attachment can also be utilized to water flower beds in remote locations.

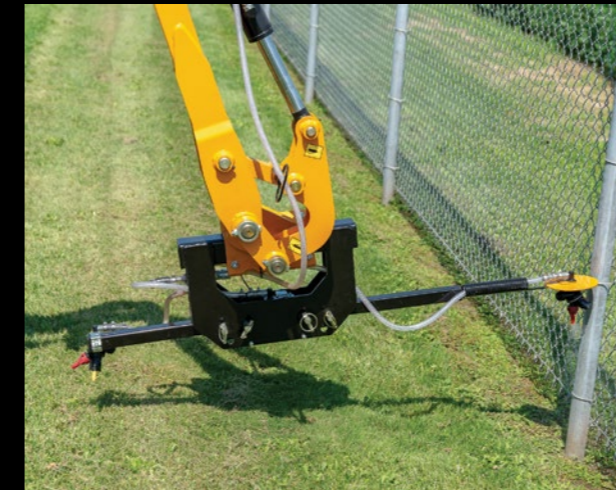
An in-cab rotary dial allows the operator to select the volume of water in litres to be dispersed. For example, setting the dial to 0 will disperse ½ litre; setting the dial to 1 will disperse 1 litre; setting the dial to 2 will disperse 2 litres, and so on. For continuous water flow, set the dial to 9 and then press and hold the on/off button on the joystick.

Operating the Spray Arm is simple: manoeuvre the tractor and attachment into position, select the desired water volume and press the on/off button on the joystick. When the water shuts off, the operator can shift or rotate the Spray Arm back towards the tractor and move on to the next plant.



180 DEGREE BOOM ROTATION

The operator can rotate the entire boom assembly 180°; this allows the attachment to water on the tractor's left or right side and any position in between. Additionally, the Spray Arm is equipped with a 40" side shift.



SPRAY ARM SPRAY HEAD

The Trackless Spray Arm is the ideal solution for spraying weeds in the summer months. The attachment features two interchangeable spray heads, allowing for efficient use in a variety of scenarios.

The double-sided spray head was designed for spraying around guard rails and barriers.

The flexible spray head is spring-mounted and was designed for spraying against fences or other obstacles.



150-GALLON WATER TANK

The 150-gallon (565 L) Water Tank has many applications. The Tank can be used with the Spray Arm, Brine Spray System, and Spray Bar Kits for Power Angle Sweepers, the Pickup Sweeper and the Asphalt Cold Planer.

The stainless steel Water Tank is designed to mount within the Dump Body attachment.



80-GALLON WATER TANK

The 80-gallon (300 L) Water Tank is moulded from semi-translucent polypropylene.

It includes a 12V electric pump, adjustable relief valve, hosing, and a harness with a trailer plug to connect to the rear of the MT. A large lid can accommodate filling from a variety of water sources.

The Trackless Water Tank attachment is ideal for dust suppression when combined with optional Spray Bar Kits.

POWER ANGLE SWEEPER

The Power Angle Sweeper can be used to perform a wide variety of tasks every month of the year, making it one of the most cost-effective and versatile attachments to own. In addition to sweeping snow, sand, gravel or other debris from sidewalks, parking lots and cul-de-sacs, the Sweeper can be used to dethatch large lawns and playing fields.

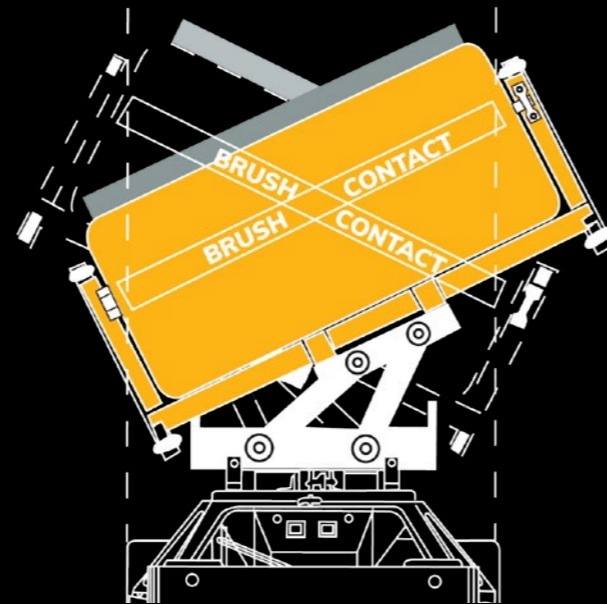
The high-output hydraulics of the Trackless MT directly drive the broom head, while a relief valve protects the core from twisting in overload conditions. The scissor frame is designed to automatically centre the sweeping pattern in front of the tractor as the broom is angled. Colour-coded quick couplers and integrated storage stands contribute to the attachment's ease of use.

The Sweeper is available with 3 bristle options to accommodate various applications: all poly, 1/2 poly and 1/2 wire, and all wire.

Available widths: 3', 4', 5', 6', 7' and 8'.



SCISSOR FRAME CENTRES BRUSH HEAD



PICKUP SWEEPER

The winter battle can leave a considerable accumulation of sand and other debris on sidewalks. The Trackless Pickup Sweeper is the ideal attachment for your sidewalk spring clean-up.

The Sweeper is driven for one or more blocks collecting debris in its path and emptied by a hydraulically controlled bottom gate.

Rubber skirting on the sides and front help control dust. Adding the optional Spray Bar Kit and Water Tank attachment provides additional dust suppression.

LINE & STENCIL PAINTER

The Trackless Line and Stencil Painter attachment is used for both straight line and stencil painting.

For straight line painting, simply remove the cart, set up the spray gun and proceed.

For stencil painting, a hose reel and hand wand are provided. Stencils can be stored in one of the two storage drawers.



SUMMER ATTACHMENTS

BOOM FLAIL MOWER

Almost every municipality has several areas which are challenging, unsafe or impossible to mow. Ditches, steep inclines, over guard rails and waters-edge cutting become problems of the past once the Trackless Boom Flail Mower enters the scene.

Benefits:

- Front-mounted for better visibility compared to side or rear mount boom flails, resulting in less operator fatigue and safer operation.
- The compact size of the MT and Boom Flail decreases interference with passing traffic compared to larger agricultural-type tractor/mower combinations. The compact size is also beneficial when transporting to and from the job site.
- Hydrostatic speed control allows the operator to react to oncoming obstacles for optimum safety and productivity.
- The Boom Flail can be removed from the MT within minutes, allowing the operator to mount another attachment and move on to the next task.



74" FRONT FLAIL MOWER

The Front Flail Mower was designed to cut heavier grass, weeds, scrub and light brush where a standard rotary lawn mower could not cope. An enclosed mower housing and rubber safety skirts keep the cut grass, mulch and other debris within the cutting chamber. This allows for safe mowing near roads, parks and other busy areas.

Large gauge wheels and a full-width gauge roller give the mower front-to-rear flexibility, allowing it to follow ground contours, producing an even cut without turf damage.



AERATOR

The Aerator is mounted to the front of the Trackless MT, allowing the operator to keep the implement in their sight at all times. The tine discs swivel with the tractor. This feature allows the operator to steer around obstacles without having to raise the attachment as with conventional, rear-mounted aerators.

With the front-mount design, the operator can lift the Aerator, shift the MT into high range, and move to the next job site without having to trailer the equipment.



COLD PLANER

Sidewalk maintenance doesn't stop when the snow melts. Winter freeze-thaw cycles can cause frost heave and wreak havoc on pedestrian walkways, creating differences in sidewalk elevations. These repairs are often outsourced to companies specializing in slab jacking (mudjacking), grinding or milling.

However, a public works department equipped with a Trackless MT and Cold Planer can repair concrete or asphalt surfaces in a cleaner, faster and more cost-effective manner, saving the municipality from unnecessary costs.

DEEP REDUCTION (OPTION)

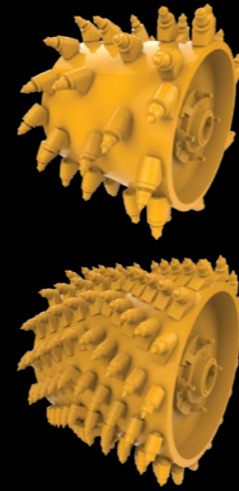
The Trackless MT is available with a mechanical, 10:1 planetary Deep Reduction transfer case. When engaged, maximum speed of the tractor is 10 feet per minute. The Deep Reduction generates 10 times the wheel torque compared to normal low range. Achieving creeper gear speeds any other way may be cheaper but will not provide the same performance.

The Trackless Deep Reduction results in smoother, surge-free operation of the Cold Planer. Tilt, depth, and side shift controls add to the attachment's precision, and when combined with the articulation of the Trackless MT, gives the operator ultimate manoeuvrability.

YOUR CHOICE, ASPHALT OR CONCRETE

The Asphalt Cold Planer is ideal for repairs to asphalt abutting manhole covers, curbsides, gutters and driveways. It can also be used for pothole repairs as well as utility cuts.

The primary function of the Concrete Cold Planer is to mill sidewalk elevation differences. However, municipalities have also utilized the Concrete Cold Planer to mill elevated curbs, driveway entrances and wheelchair access ramps.



SIDEWALK MILLING VS COSTLY ALTERNATIVE



SPRAY BAR KITS

The Trackless Spray Bar Kits can be utilized with Power Angle Sweepers, the Pickup Sweeper and the Asphalt Cold Planer.

When coupled with either the 80-gallon or the 150-gallon Water Tank, the Spray Bar Kits provide excellent dust suppression.



BOOM SPRAYER

A 14' wide Boom Sprayer is available and mounts to the rear of the 80-gallon Water Tank frame. The Sprayer's booms can be folded inwards for easy transportation. Additionally, the Boom Sprayer features a forward and reverse break-away system.



STUMP GRINDER

The Trackless front-mounted Stump Grinder has a 24" diameter rotor with 34 bolt-on carbide teeth. The tractor's hydraulic system powers the Stump Grinder. Joystick controls provide precise and accurate operation.

The attachment and tractor can be easily manoeuvred and driven from one job site to another.



FRONT END LOADER

The Trackless self-levelling Front End Loader is ideal for lighter work required by grounds maintenance departments. Smooth, accurate control of the Loader by way of the joystick, combined with the articulated steering of the tractor, allows the operator to manoeuvre with precision and place material exactly where required.

Available in 49" and 77" widths.

FALL ATTACHMENTS

LEAF LOADER



FASTER PICK UP, LESS PERSONNEL, HEAVIER LOADS & FEWER TRIPS

The Trackless Leaf Loader is an advanced and efficient leaf loading attachment, whereby leaves are picked up curbside, mulched, and blown into a truck.

The Leaf Loader can load up to four leaf debris trucks per hour and 100,000 pounds of leaves per day. After using the Leaf Loader for their leaf pick-up programs, many customers claim that they are three to four weeks ahead of schedule.

MULCHING

Leaves can represent up to 20% of a municipality's solid waste. Many municipalities have banned leaf disposal by landfill or incineration, and as others follow, mulching and composting will soon become mandatory as the first step in leaf disposal or recycling.

RECYCLING

Mulch can be sold or offered free of charge to landscapers and the general public for their gardens or flower beds. Although the demand may not be large enough to recycle 100% of the mulch generated, the demand will increase every year once a program is implemented.

NO BAD WEATHER DAYS

With a heated cab, rain, snow or cold weather does not affect the operator's willingness to work. Furthermore, none of these conditions affect the Leaf Loader's ability to pick up the leaves, even if they are frozen to the asphalt.

NO PHYSICAL LABOUR

The operator can remain in the cab and let the Leaf Loader do the work. As with any job where physical demands are high, total mechanization can easily double, if not quadruple, productivity.

LESS TRAFFIC CONGESTION

The Trackless Leaf Loader and truck operate close to the curb, minimizing disturbance to traffic flow.

BUFFALO TURBINE DEBRIS BLOWER

The combination of the Trackless MT and Buffalo Turbine Debris Blower is ideal for leaf and debris clean-up in parks, cemeteries, trails and other areas where larger equipment is not practical.

The Buffalo Turbine Debris Blower is powered by the MT's front PTO. To adjust the velocity of the Debris Blower, simply increase or decrease engine RPM via the hand throttle. Nozzle rotation and speed of nozzle rotation are both controlled by the joystick, providing smooth and accurate control.

Since the Debris Blower utilizes the MT's front PTO and joystick, additional switches or controls are not required. This provides ease of operation and makes installation and removal quick and simple.

A 12" round nozzle is standard; optional shaped nozzles are available.



BEFORE AND AFTER



INFRARED ASPHALT HEATER AND 45KW GENERATOR



SIMPLICITY OF OPERATION

Operation of the Infrared Asphalt Heater is simple: position the Heater over the repair area, activate the tractor PTO, set the cycle time and press the start button.

CONTROLLED CYCLE TIMES

A timer controls heat cycle time. To achieve optimum heating time for the conditions, heat cycle time can be increased or decreased in 2 minute intervals.

NO OPEN FLAME

The Trackless Infrared Heater has no open flame. Instead, electric elements produce an even and controlled heat that will not burn the surface.

MANOEUVRABILITY

Since the Heater is mounted in front of the tractor, it is easier to manoeuvre and position than towed trailer-mounted units. With the precise control of the tractor's articulated steering, the operator can accurately position the Infrared Asphalt Heater.

TWO MACHINES IN ONE

When the Infrared Asphalt Heater is not in use, it can be separated from the Generator frame by simply removing four pins.

The Generator produces 45 KW and 175 amps. This provides enough power to run welders, portable lighting, pumping stations, and in an emergency situation, essential functions of a municipal building. The Generator comes equipped with both 110 V and 220 V receptacles. For safety, security fencing for both the tractor and Generator is included, as well as safety lockouts.

GENERATOR MAY BE PURCHASED SEPARATELY



ELIMINATE:

- Propane tank storage regulations
- Training/licensing personnel for propane
- Propane tank shortages
- Possibility of leaking valves or tank ruptures
- Open flame in close proximity to propane tanks
- Open flame over or near catch basins or manholes where there is a potential for flammable gases or liquids

SPECIFICATIONS

ENGINE	STD	OPT
John Deere Model 4045 TFC 03		
Emission Rating Stage 5		
Displacement 4.5 L	✓	
HP Power Rating 74 HP, 55 KW		
Torque 224 lb-ft, 304 NM @ 1600 r.p.m.		
Bore x stroke 4.2 x 5.0 inch		
Turbocharged		
Equipped with start aid and 1000 watt engine block heater	✓	
Icons and warning messages displayed on digital dash	✓	
Reversing engine fan	✓	
SPEEDS		
Low range 0 to 12 km/h (0 to 8 mph)	✓	
High range 0 to 30 km/h (0 to 19 mph)		
Deep low range 0 to 3 m (10 ft) / min		✓
High range lockout to prevent operation of attachments in high range		✓
P.T.O		
Front PTO 1-3/8" 6 spline, 540 RPM	✓	
Rear PTO 1-3/8" 6 spline, 540 RPM		✓
Twin disc over center clutch with electric over hydraulic actuation	✓	
Reduction box 4:1	✓	
POWERTRAIN		
Sauer Danfoss hydrostatic/electronic transmission and motor	✓	
Control by electronic foot pedal programmed to control hydrostatic independently or both engine RPM and hydrostatic simultaneously	✓	
Trackless mechanical transmission with high/low range and neutral	✓	

POWERTRAIN (CONTINUED)	STD	OPT
Cruise control in low range	✓	
Dana style model 60 full float axles with new heavy-duty alloy spindles and limited slip differentials – 7,000 lb capacity each	✓	
10:1 deep reduction planetary transmission. When coupled to mechanical transmission, 4 speed ranges instead of 2. Deep low is 0 – 3 m (10 ft) / min		✓
Electronic locking front differential – will not engage in high range		✓
Axle extensions for slope mowing		✓
HYDRAULICS		
20 gpm hydraulic gear pump driven by timing gears of engine	✓	
14 gpm hydraulic gear pump, only driven with PTO clutch engaged	✓	
Joystick control with 8 backlit membrane switches, 4 float position switches also have additional LED indicator lights. Switches colour coded to circuits. Includes FNR (forward/neutral/reverse) switch.	✓	
6 (3 pair) low volume front hydraulic couplers for attachment control	✓	
4 (2 pair) high volume hydraulic couplers to power attachments requiring approximately 16 gpm	✓	
2 (1 pair) high volume hydraulic couplers at rear of tractor	✓	
Variable flow to rear hydraulics by way of rotary dial switch in cab	✓	
Cartridge-type hydraulic filter mounted at highest point in system to allow dry changes	✓	
Thermostatically controlled bypass from oil cooler for start-up in cold conditions	✓	
Steel hydrostatic lines	✓	
Low hydraulic oil warning	✓	
Inching switch outside cab to control lift cylinders for safe pinning of attachments	✓	

BRAKING	STD	OPT
Hydrostatic dynamic braking programmed for smooth deceleration	✓	
Driveline brake	✓	
Service brake application also activates more aggressive hydrostatic braking	✓	
Mechanical parking brake with warning message displayed on digital dash	✓	
ELECTRICAL		
1000 CCA group 31 battery	✓	
200 amp alternator	✓	
Main circuit breaker protection and mini blade fuses	✓	
Battery disconnect switch	✓	
Switch, wiring and plumbing for spray systems	✓	
CAN wire to front plug to control engine RPM from external source such as Generator/Infrared Asphalt Heater	✓	
7 prong trailer plug	✓	
GPS / Data tracking port		✓
WiFi connected diagnostic		✓
12 volt power point auxiliary outlet for cell phone	✓	
12 volt 2-way radio jacks	✓	
STEERING		
Articulated steering 35 degrees each way	✓	
Orbitrol hydraulic motor, hydraulic steering cylinder, tilt steering column	✓	
Inside turning radius approximately 8-feet	✓	
High strength spherical bearings for pivot pins and steering pins	✓	
Bearings and pins greaseable	✓	

TIRES & WHEELS	STD	OPT
LT 245/75R x 16 10 ply radial tire on HD 16" 8-bolt rims	✓	
31 x 15.50 x 15 8 ply turf tires on HD 15" 8-bolt rims		✓
Dual 10 ply loader lug tires (8) mounted on 8 rims		✓
Terra Grip Turf		✓
Wheel nut indicators		✓
HITCHES		
Front Trackless quick hitch with dual lift cylinders	✓	
Rear Category 1, 3-point hitch with anti-sway bar		✓
LIGHTS		
4 - LED headlights (High/Low beam)		
1 - LED backup light	✓	
2 - Rubber mounted shockproof LED tail lights		
1 - Interior dome light		
Front and rear LED signal lights and 4 way flashers	✓	
8 LED flashing lights above roof, mounted in HVAC guard 2 on each side for 360 degree visibility, all amber or 4 blue, 4 amber	✓	
Second rear LED backup light		✓
Additional high-mount rear tail lights		✓
Headlight, signal (marker) light guards		✓
FINISH		
All steel components prepped in 5 stage phosphate wash, 2 part epoxy primer with rust inhibitor, 2 part polyurethane automotive top coat	✓	
Latches, linkages, levers, battery hold down straps and bolts, support rods, striker plate, shifter gate and various small brackets zinc plated	✓	
Colour: highway yellow with black trim, grey/black interior	✓	
Custom colours to customer specification		✓

SPECIFICATIONS (CONTINUED)

CAB FEATURES	STD	OPT
Certified ROPS cab structure. Steel roof with rain gutters	✓	
Digital dash: tachometer, speedometer, hour meter, fuel level, engine coolant temp., hydraulic oil temp., engine oil pressure, voltmeter	✓	
7-speed HVAC fans	✓	
HVAC system with auxiliary heat and pressurization	✓	
2 outside and 1 inside rear view mirror	✓	
3-point retractable seat belt	✓	
AM/FM/Bluetooth stereo, dual speakers, external aerial with amplifier	✓	
Cup holder, cell phone holder, door pocket, storage tray	✓	
Heated seat		✓
Fire extinguisher		✓
First aid kit		✓
Gas strut door cylinder and safety strap	✓	
Tilt steering column with horn, signal lever, hazard button	✓	
DOT-approved tinted tempered safety glass	✓	
Left and right side slider windows	✓	
Full colour digital dash including backup camera when in reverse	✓	
3-speed pantograph wiper and windshield washer	✓	
Intermittent front wiper, 2-speed rear wiper and washer	✓	
Conaflex sound deadening, sound barrier floor matting	✓	
Slopemeter		✓
High back, fabric-covered air ride seat	✓	
Left and right arm rest	✓	

EXTERIOR FEATURES	STD	OPT
Steel panels and top hood, 2 hinged access doors, hinged rear grill	✓	
Top, rear and side panels removable without tools	✓	
Heavy-duty 10 gauge steel fenders	✓	
SMV – slow-moving vehicle sign	✓	
Pintle hitch		✓
2-5/16" ball hitch		✓
Rear licence plate bracket and light		✓
SAFETY FEATURES		
Neutral safety start switch	✓	
Automatic hydraulic power shut off if rotary mower wings raised	✓	
Automatic PTO shut down if operator leaves seat	✓	
Automatic engine shut down if operator leaves seat with shifter not in neutral position	✓	
Automatic hydraulic power shut off if operator leaves the seat	✓	
Application of service brake foot pedal activates more aggressive hydrostatic braking in conjunction with the service brake	✓	
Wire finger guard protection from engine fan blades	✓	
Reflective striping on both sides and rear of tractor	✓	
Pinch point, danger and caution decals	✓	
Backup alarm / Backup camera	✓	
White sound reversing alarm		✓
CAPACITIES	US	METRIC
Fuel Ultra low sulfur diesel ONLY	24.3 gal	94.0 L
Engine Oil John Deere Plus-50 II or equivalent	2.25 gal	8.5 L

CAPACITIES (CONTINUED)	US	METRIC
Coolant Must meet ASTM4985 (GM6038M)	5.68 gal	21.5 L
Hydraulic oil Hydrex MV46 or equivalent	19.8 gal	75.0 L
Differentials 80W90 EP or equivalent	2.4 qt	2.3 L
Reduction gearbox 80W90 EP or equivalent	1.1 qt	1.0 L
Mechanical transmission 80W90 EP or equivalent	3.2 qt	3.0 L
WEIGHTS & DIMENSIONS	US	METRIC
Overall length including rear bumper	149.5 in	3797 mm
Height to top of HVAC system	88.0 in	2235 mm
Track width with radial tires	49.5 in	1257 mm
Overall width including fenders	50.5 in	1283 mm
Weight with oils, coolant and full tank of fuel	6900 lbs	3130 kg
OTHER OPTIONS		
Heated mirrors		
Ride control		
Automatic grease system		
Sun visor		
Locking hoods		
Locking fuel cap		
Roof guard		
Hydraulic oil tank heater		
LED dome light		
Extra set of keys		
Front tractor weight kit		

ATTACHMENTS	REQUIRED
72", 10' or 14' Rotary Finishing Mower	Turf Tires
Aerator	Turf Tires
Front Flail Mower	Turf Tires
Stump Grinder	Turf Tires
Boom Flail Mower	Dual Tires
Asphalt Cold Planer - Deep Reduction Suggested Only	Deep Reduction
Concrete Cold Planer	Deep Reduction
Leaf Loader	Duals on Rear
Electric Infrared Asphalt Heater	
Buffalo Turbine Debris Blower	
Front End Loader with 49" or 77" Bucket	
80-Gallon (300 Litres) Water Tank and Spraying Systems	
150-Gallon (565 Litres) Stainless Steel Water Tank	
Spray Arm	
3', 4', 5', 6', 7' or 8' Power Angle Sweeper	
48" Pickup Sweeper	
51", 60" or 75" Ribbon Snowblower	
51", 60" or 70" Twin Auger Snowblower	
5-Position Folding V-Plow	
5', 6', 7' or 8' Angle Plow	
Fixed V-Plow	
Snow Lion Ice-Breaker	
Rear Mount Sidewalk Spreader	
Tow Behind Spreader	

SERIES 7

LEARN MORE AT [TRACKLESSVEHICLES.COM](https://www.tracklessvehicles.com)



TRACKLESS VEHICLES

55 THUNDERBIRD DRIVE
P.O. BOX 244, COURTLAND ONTARIO
CANADA N0J 1E0
PHONE (519) 688-0370
FAX (519) 688-3644
[tracklessvehicles.com](https://www.tracklessvehicles.com)

SOLD AND SERVICED BY

SERIES 7



TRACKLESS VEHICLES BOOM FLAIL MOWER



The Trackless Boom Flail Mower is perfect for those difficult, unsafe or impossible areas to mow. Ditches, steep inclines, over guard rails and waters-edge are areas in which the boom flail excels. Hydrostatic speed control allows the operator to react to oncoming obstacles for optimum safety and productivity.

Can be removed from the Trackless MT in approximately 10 minutes. Within minutes another attachment can be installed, and the operator can be on the way to another job site.

General Info

Width of cut: 43½"; overall width of head 53½"

Horizontal reach: 13½' from center of MT to outside cut

Overall level ground cutting coverage: 11', starting 5" inside outer tire

Below grade cut: 53"

Vertical reach: 13½'

Cutting blades: 33

MOWERMAXTM

Boom Mower



MADE IN FLORIDA

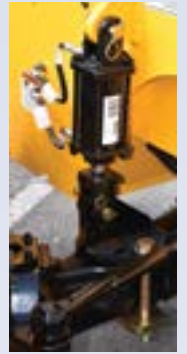
ENGINEERED FOR PERFORMANCE

The revolutionary, **3rd Generation MowerMax Boom Mower** is designed and purpose built from the ground up to have the best **Stability, Visibility, Maneuverability and Versatility** of any boom mower on the market. The MowerMax is a heavy-duty boom mower that is also very safe, easy to operate and maintain.



OPTIMUM STABILITY

The MowerMax is designed to have a low center of gravity. The counterweights are mounted directly opposite the boom for maximum benefit and it's easy to add additional counterweights. These features combined with the rear axle stabilizer system, make the MowerMax an extraordinarily stable machine.



INCOMPARABLE VISIBILITY

The MowerMax cab forward design greatly enhances the operator's visibility making for a much more productive and safer cutting experience. Plus the right side of the cab has an unobstructed view.



EXTREMELY SIMPLE & COMFORTABLE

The MowerMax is extremely simple to operate and very comfortable for the operator! The MowerMax is easy to get into and out of with non slip coated steps integrated into the main counter-weight. The cab has a plush, Grammer air-ride suspension seat with tilt and lumbar, a tilt & telescoping steering wheel with steering knob, 6.2in color AM/FM/CD stereo with Bluetooth & optional Backup Camera, and a 7in Control Display.



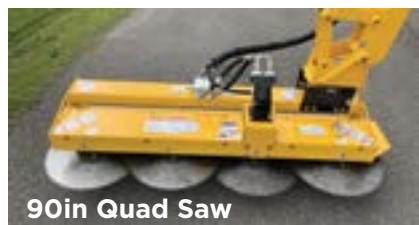
OUTSTANDING MANEUVERABILITY

The MowerMax has hydrostatic, 2 speed transmission which is operated by two foot pedals and comes with permanent 4 wheel drive with 45% limited slip front axle and 100% operator controlled rear differential lock. The MowerMax Boom also has 4 wheel steering with 3 different steering modes: **1) 4 Wheel Steer 2) Front Wheel Steer or 3) Crab Steer.** These three steering modes allows the MowerMax to be extremely maneuverable and productive. Lastly all of MowerMax booms come with 180 degree rotation with a helical actuator for maximum operating flexibility.



SERIOUS VERSATILITY

The MowerMax Boom is extremely versatile with 4 different boom head attachments as well as the optional front lift arms with universal quick attach mounts that allows you to use over 30 common skid steer attachments.



EXCEPTIONALLY SAFE

ATMAX Equipment knows that boom mowing often happens on busy roads under rough conditions, so safety of the operator and the machine are of utmost importance! **1/2in Lexan Glass** on boom side. **ROPS & FOPS** - Most tractors and other purpose built boom mowers only have ROPS even though all trim trees with them! **Bright Yellow Powder Coated Paint** with 2 front LED daytime running lights, 2 reflective SMV diamonds, 2 - SAE Class 1 strobes, 1 - 35in LED directional control bar, 12 amber/white mini LED flashers, and over 30ft of reflective decals and DOT tape.



MOWERMAX BOOM MOWER SPECIFICATIONS

Power Unit Specs

Engine	Cummins F 3.8QSF 154 HP Stage V Turbo Diesel
Cooling System (Engine & Hydraulic)	Horizontally-mounted Radiator/CAC/Oil Cooler with High Flow Fan & Reversing Cleanout System
Transmission	Two Speed Closed Loop Hydrostatic with Double Foot Pedal Controls, Optional 4 Speed Transmission with 220% more torque
Drive Train & Steering	Permanent 4-Wheel Drive with 4-Wheel Steering and 3 Steering Modes
Differential Lock	45% Limited Slip on Front Axle and 100% Operator-controlled Rear Locking Rear Axle
Parking Brake	Standard SAHR Electric over Hydraulic
Service Brake	Standard Foot Pedal Controlled
Tires	460/70-R24 Radial with Multiuse Tread or 550/45-22.5 22 Ply Flotation with Lug Tread
Ground Speed	0-8 MPH Work Mode 0-25 MPH Travel Mode

Boom Arm Specifications

Boom Controls	Multifunction, Electric Over Hydraulic Joystick
Boom Lengths	Approximately 22ft, 24ft, 26ft & Telescoping 27ft to 30ft
Boom Rotation	180 Degrees with Helical Actuator with Cross Port Relief
High Flow Hydraulics to Boom Attachments	Closed Loop Hydrostatic Pump with 30GPM @ 5000psi
Available Boom Attachments:	
Rotary Decks	50in & 60in with Hydraulic Door & Optional 90 Degree Swivel
Mulching Head	50in Fixed Tooth Mulching mfg for MowerMax by Fecon with optional 180 Degree Swivel
Saw Heads	48in Single Blade Direct Drive, 69in Triple Blade Belt Drive & 90in Quad Blade Belt Drive
Flail Heads	50in Brush Flail & 60in Grass Flail with optional 180 Degree Swivel
Ditch Maintainer	22in Cutting Width with Hydraulically Controlled Debris Shute
Log/Debris Grapple	55in Wide (open) Grapple with 360 Degree Rotation

Front Lift Arm Specs (Optional)

Attachment Types	Most Universal Skid Steer Mount Attachments
Lift Capacity	2500lbs
High Flow Hydraulics to Attachments	Closed Loop Hydrostatic Pump with 30GPM @ 5000psi

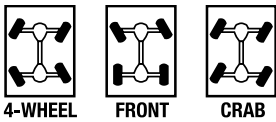
General Specs

Width with Boom in Stow	100in
Length with Boom in Stow (no boom attachments)	236in
Height	112in
Weight (with 24ft boom & no attachments)	19,500lbs approximately
Diesel Fuel Tank Capacity	48 Gallon Aluminum Tank with Locking Fuel Cap
DEF Tank Capacity	5 Gallons

Cab & Safety Features

Grammer Air Ride Suspension Seat with Back Rest, Lumbar, Tilt with Operator Presence Switch & Seatbelt with Switch
 Tilt Steering Column with Telescoping Steering Wheel with Knob
 Easy to View, Adjustable 7in Color Display with All Gauges and Warning Signals
 6.2in Color AM/FM/CD Stereo with Bluetooth and Optional Backup Camera
 Front Hedlights with LED Daytime Running Lights and Rear LED Brake Turn and Backup Lights
 12 Amber/White LED Mini Flashers on all 4 Sides
 1 - Cab Mounted, Amber LED Bar and 1 - LED Directional Control Bar on Rear on Cab
 Backup Alarm
 2 Reflective SMV Diamonds and over 28ft of Reflective DOT tape
 Certified ROPS - ISO 3471 & FOPS - ISO 3449

STEERING MODES



6902 East 7th Avenue • Tampa, FL 33619

Sales: 813-634-1111

WWW.MOWERMAX.COM



Call to schedule a demonstration:

DAVID: 813-781-0100
(FL, TX, LA, VA, WV, MO)

NEAL: 423-595-4897
(AL, AR, GA, TN, SC, NC)

PATRICK: 614-306-6887
(OH, IN, KY, IL, MI, PA)

MOWERMAX[®]

Boom Mower

Boom Arm Attachments



***50in & 60in Rotary Deck
with optional 90 Degree Swivel***



***50in Fecon Mulching Head
with optional 180 Degree Rotate***



***50in Hammer Flail
with optional 180 Degree Rotate***



***62in Standard Flail
with optional 180 Degree Rotate***



***50in HD Flail with
optional 180 Degree Rotate***

Boom Arm Attachments



***Triple or Quad Saw
with optional 90 Degree Rotate***



***48in Single Saw
with optional 90 Degree Rotate***



***55in Grapple with 360 Rotator
(available on summer 2021 units)***



***22in Ditch Maintainer
with Adjustable Hydraulic Chute***

ATMAX
EQUIPMENT CO.

6902 East 7th Avenue • Tampa, FL 33619

Sales: 813-634-1111

WWW.MOWERMAX.COM



MOWERMAX[®]

Boom Mower

Front Lift Arm Attachments



Angled Broom



96in Rotary Mower



Cold Planer (pot hole repair)



Buffalo Blower
(for dirt, leaves and light snow)



Chipper



Guardrail Mower

Front Lift Arm Attachments



Stump Grinder



Brush Grapple
(moving debris off roads)



Pavement Saw



Trencher



Dozer Blade



Pallet Forks



Snow Blower



**120in Snow Plow
with Hydraulic Angling**



Snow Pusher

ATMAX
EQUIPMENT CO.

6902 East 7th Avenue • Tampa, FL 33619

Sales: 813-634-1111

WWW.MOWERMAX.COM





Quote

ATMAX Equipment Co.
 6902 E. 7th Ave
 Tampa, FL, 33619
 Phone: 813-634-1111
 Web: www.mowermax.com

Order No.: 014282
Order Date: 9/11/2023
Delivery Date:
Expiration Date: 9/11/2023
Customer ID: C000020
Currency: USD
Contract: NC State Contract No. 107499

BILL TO:	SHIP TO:
Town of Erwin NC PO Box 459 Erwin NC 28339 United States of America	Town of Erwin NC 730 N. 13th St. Erwin NC 28339 United States of America

CUSTOMER P.O. NO.	TERMS	CONTACT
076733	Net 30 Days	Mark Byrd
FOB POINT	SHIPPING TERMS	SHIP VIA

NO.	ITEM	QTY.	UOM	PRICE	DISC.	EXTENDED PRICE
1	MMBGEN3NEW: Mower Max Boom - Gen 3	1.0000	EA	191,789.7500	0%	191,789.75
2	MMB-BASEMODEL: Base Model	1.0000	EA	0.0000	0%	0.00
	NOTE: 154 HP Turbo Diesel, Stage V Cummins 4-Speed Hydrostatic Transmission 6 Section Valve Bank with Electro-Hydraulic Joystick Controls 3450lbs Counterweight with Integrated Steps Cab certified for both ROPS - ISO 3471 and FOPS - ISO3449 AC/Heat Cab with AM/FM/DVD 6.2in Touchscreen with Blue Tooth and iPod Control Heavy duty Radial Multi-Purpose Tires 180 Deg Boom Rotation Stucchi Quick Coupler System for easy detaching hoses from boom Full time 4WD and 4 Wheel Steering with Rear Axle Stabilizer Front headlights with LED daytime running lights, turn lights and rear brake lights with turn lights 1-Class 1 LED Strobes, 12 LED Mini Flasher/Strobes and 1 - 36in LED Directional Control Bar 12v Air-ride, Grammer cloth seat with lumbar, tilt, arm rest & two safety switches Training - Operator and Safety Back-up alarm and camera					
3	MMB-BOOM-26: 26ft Boom Arm with 1 additional 1400lb CW and without Head Attachment	1.0000	EA	17,212.5000	0%	17,212.50
4	MMB-DECK60ART: 60in Rotary Deck with hydraulic controlled deck door, 90 Degree Swivel and Quick Disconnect	1.0000	EA	18,313.2500	0%	18,313.25
5	FECONROT: Fecon Mulching Head with 180 Degree Rotate with Quick Disconnect	1.0000	EA	28,300.7500	0%	28,300.75
6	MMB-FLA: MMB Front Lift Arms	1.0000	EA	9,974.7500	0%	9,974.75

Sales Total:	265,591.00
Freight & Misc.:	0.00
Less Discount:	0.00
Tax Total:	0.00
Total (USD):	265,591.00



Joe Johnson Equipment

Subsidiary Of Federal Signal Corporation

September 29, 2023

Town of Erwin
Erwin, NC

RE: Trackless MT7 Articulating All-Season Tractor

We would like to take this opportunity to thank you for your interest in Joe Johnson Equipment (JJE) North America's largest supplier of environmental equipment.

As proud distributors of Trackless Vehicles Ltd.'s innovative multi-purpose municipal tractors, JJE is pleased to present the following budgetary quotation to provide one (1) new Trackless MT7 Municipal Tractor and attachments.

Quotation

To provide one (1) New Trackless MT7 municipal tractor, equipped as detailed below:

Engine:

- John Deere - Tier 4 final
- 74 BHP @ 2500 RPM, turbo charged
- 4.5 Litre (275 cu. in.)
- Torque 224 lb-ft. @ 1,600 RPM
- Equipped with anti-idle feature, cold start aid, block heater and air breather warning lamp
- Large capacity air breather with direct connection to pre-cleaner
- ***NOW INCLUDED:*** Automatic reversing engine fan

PTO:

- Front PTO 1-3/8" spline, 540 RPM
- Twin Disc over center clutch with electric over hydraulic actuation
- Reduction box 4:1

Hitches

- Trackless quick hitch with dual lift cylinders

Powertrain:

- Sauer Danfoss hydrostatic/electronic transmission and motor
- Controlled by electronic truck style foot pedal programmed to control hydrostatic independently or both engine RPM and hydrostatic simultaneously
- Trackless mechanical transmission with high/low range and neutral
- Dana Style Model 60 full float axles with new heavy duty alloy spindles.



Joe Johnson Equipment

Subsidiary Of Federal Signal Corporation

- Limited slip differentials 7,000 lbs. capacity

Hydraulic Systems:

- 20 GPM hydraulic gear pump driven by timing gears of engine
- 14 GPM secondary hydraulic gear pump
- **NOW INCLUDED:** Low hydraulic oil warning
- Six (3 pair) low volume front hydraulic couplers for attachment control
- Two (1 pair) high volume hydraulic couplers to power attachments requiring approximately 16 GPM
- Two (1 pair) additional ports in front of cab for addition of optional second high flow circuit
- Two (1 pair) high volume hydraulic couplers at rear of tractor
- Cartridge type hydraulic filter mounted at highest point in system to allow dry changes
- Steel hydrostatic lines

Braking Systems:

- Hydrostatic dynamic braking programmed for smooth deceleration
- Hydraulic service brakes on all 4 wheels
- Service brake application also activates more aggressive hydrostatic braking
- Mechanical parking brake with warning buzzer

Steering:

- Articulated steering, 35° each way
- Turning radius approximately 8' inside
- Steering column includes hazard button, signal lever and center mounted horn
- High strength spherical bearings for pivot pins and steering pins
- Greaseable bearings and pins greaseable
- Load sensing steering. Oil is only circulated to the steering cylinder when needed. This creates less heating for the hydraulic oil

Capacities

- Fuel Tank - 24 US gallons
- Coolant Tank - 26 gallons
- Hydraulic Oil Tank - 20 gallons

Speeds:

- Low range: 0 to 9 mph
- High range: 0 to 19 mph

Lights:

- Four (4) halogen headlights
- One (1) halogen backup light
- **NOW INCLUDED:** Two (2) rubber mounted shockproof LED taillights
- One (1) interior dome light
- LED Front and rear signal lights and 4-way flashers



Joe Johnson Equipment

Subsidiary Of Federal Signal Corporation

- Eight (8) amber strobe lights with branch guard
- High beams

Exterior Finish:

- All steel components including cab prepped in 5-stage phosphate wash, 2 part epoxy primer with rust inhibitor
- 2 part polyurethane automotive top coat, oven baked
- Latches, linkages, levers, battery hold down straps and bolts, support rods, striker plate, shifter gate and various small brackets zinc plated
- Color highway yellow and black trim, grey/black interior

Cab Features:

- ***NOW INCLUDED:*** Full climate control with air conditioning with 12 vents in total, defroster, 7 speed auxiliary heater and cab pressurizer with fresh air intake. Cab temperature will remain constant when set.
- Certified Rollover Protection Structure (ROPS) cab, steel roof with rain gutters
- Completely redesigned ergonomic cab interior
- ***NOW INCLUDED:*** Digital dash with full color monitor: tachometer, speedometer, hour meter, fuel level, engine coolant temp, hydraulic oil temp, engine oil pressure, voltmeter. Included color back up camera
- Two (2) outside and one (1) inside rear view mirror
- AM/FM stereo, dual speakers and external aerial with amplifier
- Cell phone holder, door pocket and storage tray
- Gas strut door cylinder and safety strap
- Tilt steering column with horn, self-cancelling signal lever and hazard button
- DOT approved tinted tempered safety glass
- Left and right side slider windows
- ***NOW INCLUDED:*** Intermittent front wiper and washer
- Rear wiper and washer
- Conaflex sound deadening, sound barrier floor matting
- Outside Cab Sound: 64 dBA at 50'. Outside Cab Sound: 74 dBA
- High back, fabric covered air ride seat with lumbar support and 3-point retractable orange seat belt
- Air ride seat switch is remote mounted in the switch panel for easy access
- ***NOW INCLUDED:*** Joystick - heavy duty base and pivot, wide sweep angle and forward, neutral, reverse switch (F-N-R) Main float switch is right beside FNR
- Joystick control with 8 backlit membrane switches.
- Three (3) float position switches also have additional LED indicator light. Switches color coded to circuits
- Joystick selector switch to automatically configures joystick for attachments
- A new joystick function feature allows operator to move both 5-way plow wings together at the same time
- ***NOW INCLUDED:*** Cruise control



Joe Johnson Equipment

Subsidiary Of Federal Signal Corporation

Tires and Wheels

- LT 245/75R x 16, 10-ply radial winter tires on HD 16" 8-bolt rims

Exterior Features:

- All steel, quick release hoods, two hinged access doors
- No tools required to remove side hoods, rear grille and top hood
- Lighter top hood manufactured from aluminum for easier lifting
- Rear grille can hinge up and slide sideways for quick removal to allow cleaning of radiator or oil cooler
- One side service - all daily checks and all filters are on the driver's side, where there are hinged access doors. For convenience as well as to eliminate having to access the engine compartment on the right side where the DPF, DOC and the complete exhaust system is located.
- Large bearing Center frame vs. old center frame liner
- Heavy duty 10 gauge steel fenders

Electrical:

- Multiplex electrical: 70% less wiring with enhanced diagnostics
- On board Self-Diagnostics computer checks all systems and determines causes of any faults
- 950 CCA Group 31 battery, 200 amp alternator
- ***NOW INCLUDED:*** Battery disconnect switch and remote battery terminal
- Hinged overhead switch panel
- Main circuit breaker protection
- Mini blade fuses mounts in IP67 watertight enclosure
- Variable flow sander switch
- Sander Auto / Run switch

Safety Features:

- Neutral safety start switch
- Automatic hydraulic power shut off and PTO shut down: If operator leaves seat
- Automatic engine shut down: If operator leaves seat with shifter not in neutral position
- Automatic hydraulic power shut off: If rotary mower wings are raised
- ***NOW INCLUDED:*** Articulation lock
- External lift cylinder switch for attachment hook up
- A wire protection guard encloses the engine fan.
- Reflective striping on both sides, rear of tractor, rear hood and below taillights
- Safety, danger, caution and pinch point decals
- Backup alarm automatically activated by the F-N-R Switch lever
- Slow Moving Vehicle Sign

Additionally Equipped With:

- Locking Differential in Front Axle -
- Ride Control Option



**Joe Johnson
Equipment**

Subsidiary Of Federal Signal Corporation

- High range Travel Lockout

Includes Delivery and Training

Purchase Price.....\$156,012.00

Additional Options to be Considered:

- 8' angle plow and attaching kit- \$7295.00
- Rear Salt/ Sand Spreader - \$7300.00
- Ice Breaker Complete - \$27,840.00
- 74' front flail mower - \$11,400.00
- Boom Flail Mower - \$34,900.00
- Complete Set of dual tires - \$5790.00
- Trackless 14' Rotary Mower - \$21,300.00
- Summer tires & wheels - \$2480.00
- Concrete 160 pick cold planer (requires deep reduction)- \$29,800.00
- Deep reduction Gearbox- \$8630.00
- 72" power angle sweeper - \$9100.00
- Water Tank and pump kit- \$3825.00
- Spray bar Kit - \$245.00
- Stump Grinder- \$14,000.00
- Buffalo Turbine- \$9600.00

We appreciate the opportunity to assist with this equipment requirement and ask that you not hesitate to contact us should additional information be required.

Sincerely,

Doug Boice
 Regional Sales Manager
Joe Johnson Equipment
 Cell: 980-239-8055
dboice@jjeusa.com

Erwin Board of Commissioners

REQUEST FOR CONSIDERATION

To: The Honorable Mayor and Board of Commissioners

From: Snow Bowden, Town Manager

Date: October 23, 2023

Subject: Erwin Police Cadet Program

At our last month's workshop, we discussed the possibility of creating a cadet program for the Erwin Police Department. We are requesting approval to start a cadet program so we can pay candidates that we have sponsored to attend Basic Law Enforcement Training (BLET). Most of the surrounding agencies have already implemented a similar type of program in order to recruit new employees. We believe that this is a good start to a system. Of course, we might have to make changes to this as we see fit. In the proposed contract we are asking for a three-year commitment. If for any reason they leave the Town of Erwin voluntarily we are required to be reimbursed \$8,000 (cost of equipment).

In order to start this process, we need to update our Job Classification and Grade schedule which is approved annually in our Fiscal Year budget. We would limit the number of cadets we had at the time to be in line with the number of positions that we had approved in the budget. If we start with this process this year there should not be any impact to the already approved budget. We would factor this program into our budgeting process next year.

Attachments:

- Proposed contract
- Updated Job classification grade schedule FY 2023-2024



ERWIN POLICE DEPARTMENT

100 WEST F STREET ERWIN NC 28339

TELEPHONE: 910-897-5122 FAX: 910-897-6663

WWW.ERWIN-NC.ORG

CHIEF OF POLICE: JONATHAN JOHNSON



Erwin Police Department Certification Training and Expense Reimbursement Agreement

THIS CERTIFICATION TRAINING EXPENSES REIMBURSEMENT AGREEMENT ("Agreement") is made and entered into by and between the Town of Erwin ("Town" or "Erwin" OR "Town of Erwin") and _____ ("Employee or Cadet").

WITNESSETH:

WHEREAS, the applicant identified above acknowledges that the Erwin Police Department (hereinafter referred to as the "EPD") has incurred substantial expenses in the hiring process for the applicant and will incur substantial expenses in the process of training the undersigned applicant to be a Sworn Law Enforcement officer in conformance with North Carolina law and to the standards of the EPD; and

WHEREAS, it is acknowledged by the undersigned that these expenses are expected to be recaptured through service by the applicant to the EPD after hiring and successful completion of the Basic Law Enforcement training, including obtaining a passing score on the State Examination, and that the EPD will suffer substantial detriment if the undersigned should resign or take employment elsewhere during a period of 36 months following applicant's hiring and the first day of work at the EPD.

NOW, THEREFORE, it is hereby agreed between the parties in consideration of the mutual promises and obligations set forth as follows:

1. The applicant agrees to undertake the required Basic Law Enforcement training, including but not limited to required classroom work and a specified period of field or facility instruction. Further, after completion of the required course, including but not limited to required classroom work and a specified period of field or facility instruction, the applicant also agrees to complete any required in-service training as scheduled. The applicant further agrees to attain a passing grade in all such training and, where applicable, to achieve the minimum standards necessary for certification as a Sworn Law Enforcement Officer as promulgated by the North Carolina Criminal Justice Education and Training Standards Commission.
2. The applicant further agrees to devote full time to the training and subsequent service and to perform all assignments and duties in a professional manner satisfactory to the agency regulations, operating procedures, orders, and directives from the EPD.



ERWIN POLICE DEPARTMENT

100 WEST F STREET ERWIN NC 28339

TELEPHONE: 910-897-5122 FAX: 910-897-6663

WWW.ERWIN-NC.ORG

CHIEF OF POLICE: JONATHAN JOHNSON



3. The EPD agrees to provide uniforms and equipment, where applicable, as determined by the EPD to be necessary to the performance of assigned duties and, further, to make available to the applicant essential training including but not limited to:
 - a. Basic Law Enforcement Training
 - b. Supervised on-duty field training
 - c. Supervised on-duty in-service training after completion of Basic Law Enforcement Training and/or field training.
4. The EPD agrees to pay the applicant wages and provide employee benefits during and subsequent to training as provided for the applicant's pay grade and job classification.
5. In the event that the applicant terminates his or her employment with the agency within 36 months subsequent to the first working day and successful completion of the training, the applicant agrees to pay to the EPD a sum to be determined by the Chief of Police based upon the time and resources expended on the hiring and training of applicant, but in no event shall the sum exceed \$8,000.00. It is specifically agreed that this sum is not a penalty, but is rather agreed upon as liquidated damages to compensate the agency for its non-reimbursed expenditures to hire and train applicant. It is agreed that liquidated damages are appropriate in that hiring and training expenses are difficult to determine with certainty and that injury to the agency for premature termination is difficult to quantify. Liquidated damages are agreed upon so that the applicant is not unjustly enriched by a breach of this Agreement. This sum does not represent an attempt to recover the salary paid.
6. The Liquidated damages set forth in paragraph five (5) above will be due and payable at the time that the applicant terminates his or her employment with the EPD prior to the expiration of the Agreement period provided for herein. The applicant further agrees that if such damages are not paid when due, the applicant shall pay all necessary and reasonable attorneys' fees, court costs, and other reasonable incidental expenses incurred in enforcing this Agreement.
7. The applicant shall not be required to pay liquidated damages for early termination if:
 - a. The applicant is dismissed from employment during the Agreement period,
 - b. The applicant is required to terminate employment due to a disabling physical illness or injury,
 - c. It is determined to be in the best interest of the EPD as determined at the discretion of the Town Manager and Chief of Police.



ERWIN POLICE DEPARTMENT

100 WEST F STREET ERWIN NC 28339

TELEPHONE: 910-897-5122 FAX: 910-897-6663

WWW.ERWIN-NC.ORG

CHIEF OF POLICE: JONATHAN JOHNSON



Note: Liquidated damages shall be payable in the event that it reasonably appears or there is substantial evidence that the applicant has willfully sought to cause his or her own dismissal, failure, illness, or injury.

8. THIS AGREEMENT DOES NOT CREATE ANY RIGHT OR ENTITLEMENT TO EMPLOYMENT AT THE ERWIN POLICE DEPARTMENT. It is expressly acknowledged by the applicant that the Town Manager and Chief of Police have absolute authority to hire and fire and notwithstanding any provision of this Agreement; no portion of this Agreement is understood or intended to in any manner modify that right. It is expressly acknowledged that the applicant acquires no rights under this Agreement other than those expressly set forth herein.

9. The applicant expressly acknowledges that he or she understands that the advice of an independent attorney with respect to this Agreement prior to signing it may be obtained at the applicant's expense. The parties further agree that this document embodies the whole agreement between them and there are no inducements, promises, terms, conditions, or obligations made or entered into other than contained herein.

10. This Agreement shall be governed by and in accordance with the laws of the State of North Carolina. All actions relating in any way to this Agreement shall be filed and heard in the Superior Court of Harnett County.

11. In the event any provision of this Agreement is adjudged to be not enforceable or found invalid, such provision shall be stricken and the remaining provisions shall be valid and enforceable.

The foregoing provisions are understood and agreed to by the undersigned. In witness whereof the parties have executed this Agreement this ___ day of _____ 20___, at ___ o'clock __m.

Applicant Date Town Manager Date Chief of Police Date

State of North Carolina
County of _____

Subscribed and Sworn to before Me, this
The ___ day of _____ 20___

(Notary Signature)

My Commission Expires: _____



ERWIN POLICE DEPARTMENT

100 WEST F STREET ERWIN NC 28339

TELEPHONE: 910-897-5122 FAX: 910-897-6663

WWW.ERWIN-NC.ORG

CHIEF OF POLICE: JONATHAN JOHNSON



Attachment A

Expense:	Total:	Agency Costs:	Note:
Registration/ Tuition			
Books			
Supplies			
Firearm			
BLET Uniform			
Duty Uniform			
Total			

Actual Expense of Training \$ _____

Date of Completion: _____

Employee Date

For the Town of Erwin Date

State of North Carolina
County of _____

Subscribed and Sworn to before Me, this
The ___ day of _____ 20__

(Notary Signature)

My Commission Expires: _____

Town of Erwin

Job Classification and Grade 2023-2024 AMENDED 11/2/2023

<u>Departments</u>	<u>Number of Positions</u>	<u>Grade</u>
<u>Administration</u>		
Town Manager	1	31
Finance Director	1	21
Town Clerk/Human Resources Director	1	18
Finance Officer	1	15
<u>Planning</u>		
Town Planner	1	19
Code Enforcement Officer	1	17
<u>Police</u>		
Police Chief	1	25
Lieutenant	1	19
Investigator/Community Officer	2	18
Patrol Sergeant	2	17
Senior Patrol Officer	2	15
Patrol Officer	6	14
School Resource Officer	2	14
Part-Time Patrol Officers	6	
Records Clerk	1	12
Cadet	2	

**Public Works (Administration, Streets
Sanitation, Storm Water**

Public Works Director	1	23
Mechanic/Crew Leader	1	12
Maintenance Worker	1	7
Heavy Equipment Operator (Sanitation)	1	12
Heavy Equipment Operator (Street)	1	12
Part-time	Varies	

Parks and Recreation

Parks & Recreation Director	1	21
Athletic Program Director	1	15
Park Maintenance Specialist	1	10
Part-time	Varies	

Erwin Board of Commissioners

REQUEST FOR CONSIDERATION

To: The Honorable Mayor and Board of Commissioners

From: Snow Bowden, Town Manager

Date: October 23, 2023

Subject: Shop with a First Responder

This year the Erwin Police Department is partnering with the Erwin Fire and Rescue Department during the holiday season to host a “shop with a first responder event”. I think that this was a great idea that Chief Johnson and Chief Blackmon had. It really means a lot to the children who get to participate in this program. We are currently seeking donations for the event. I have been asked to present the idea of having the Town sponsoring this event.

Erwin Board of Commissioners

REQUEST FOR CONSIDERATION

To: The Honorable Mayor and Board of Commissioners

From: Snow Bowden, Town Manager

Date: October 23, 2023

Subject: Updated Resolution for NC ABC Commission

This is a pretty standard item. We have not had any issues lately with this item but we wanted to be proactive and get it updated to show the name of Chief Johnson. Whenever someone applies for a permit to sell alcohol in the Town of Erwin they have to get a letter signed off by the Chief of Police. The permit also has to be checked off by the Planning Department to ensure the location is in a place that is zoned for alcohol sales.

Attachments:

- Resolution

**NORTH CAROLINA
ALCOHOLIC BEVERAGE CONTROL COMMISSION**

(919) 779-0700

DESIGNATED OFFICIAL RESOLUTION

RESOLUTION OF THE CITY OF Erwin, COUNTY OF Harnett, REGARDING THE DESIGNATION OF AN OFFICIAL TO MAKE RECOMMENDATIONS TO THE NORTH CAROLINA ALCOHOLIC BEVERAGE CONTROL COMMISSION ON ABC PERMIT APPLICATIONS.

WHEREAS G.S.18B-904(f) authorizes a governing body to designate an official, by name or by position, to make recommendations concerning the suitability of persons or locations for ABC permits; and

WHEREAS the City of Erwin, County of Harnett, wishes to notify the NC ABC Commission of its designation as required by G.S.18B-904(f);

BE IT THEREFORE RESOLVED that Jonathan Johnson, Police Chief,
(Name of Official) (Title or Position)

is hereby designated to notify the North Carolina Alcoholic Beverage Control Commission of the recommendations of the City of Erwin, County of Harnett, regarding the suitability of persons and locations for ABC permits within its jurisdiction.

BE IT FURTHER RESOLVED THAT notices to the City of Erwin, County of Harnett, should be mailed or delivered to the official designated above at the following address:

Mailing address: 100 West F Street

Office location: Erwin Police Department

City: Erwin, NC

Zip Code: 28339 Phone #: (910) 591-4210

This the 2nd day of November, 2023.

(Mayor/Chairman)

Sworn to and subscribed before me this the 2nd day of November, 2023.

(Clerk)

**BUDGET ORDINANCE AMENDMENT
BOA 2024 – 03
FISCAL YEAR 2023-2024**

BE IT ORDAINED by the Governing Board of the Town of Erwin, North Carolina that the following amendments are made to the annual budget ordinance for the fiscal year ending June 30, 2024.

Section 1. This Budget Ordinance Amendment seeks to Increase Revenues and Increase Expenditures by \$2,601.00. This amendment is for repairs to the Dodge Charger Police Car hit by an Amazon Truck. Amazon Settled claim with the town.

Section 2. To amend the General Fund: The revenues are to be changed as follows:

Account	Description	Current Approp.	Increase/Decrease	Amended Appropriation
10-3350-000	Other Revenue	\$ 0	(+) \$ 2,601.00	\$ 2,601.00

Section 3. To amend the General Fund: The Expenditures are to be changed as follows:

Account	Description	Current Approp.	Increase/Decrease	Amended Appropriation
10-5100-170	Maint.& Repair Auto.	\$10,000	(+) \$2,601.00	12,601.00

Section 4. Copies of this budget amendment shall be furnished to the Clerk, the Governing Board, the Budget Officer and the Finance Director for their direction.

Adopted this 2nd day of November 2023.

Randy L. Baker, Mayor

ATTEST:

Lauren Evans, Town Clerk

Harnett GIS

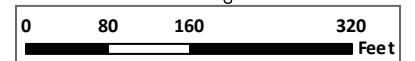
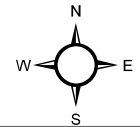
NOT FOR LEGAL USE



Harnett County GIS

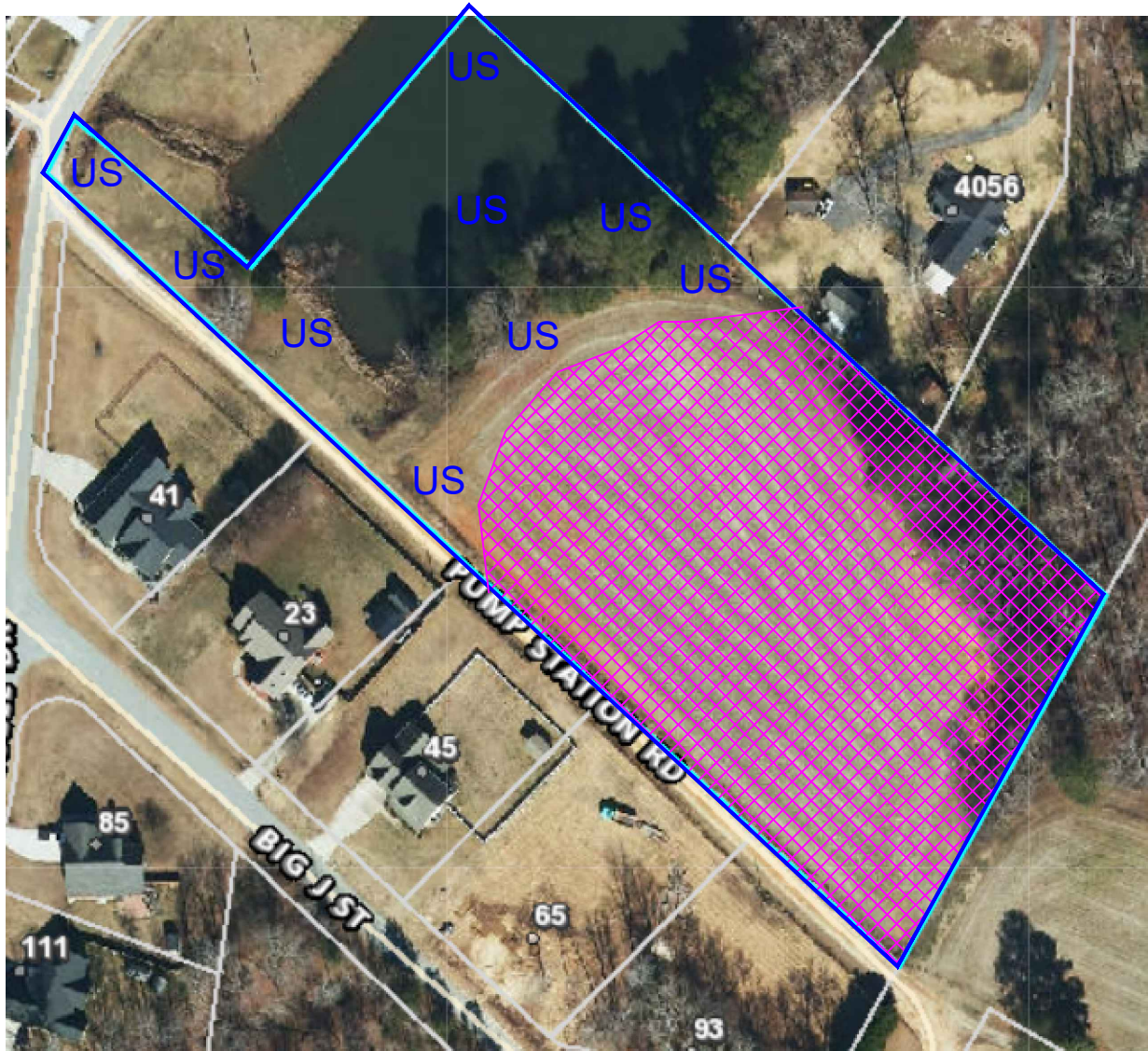
GIS/E-911 Addressing
July 12, 2023

- | | | |
|-------------------------------|-------------------|-----------------|
| Surrounding County Boundaries | Airport | US |
| City Limits | MajorRoads | RoadCenterlines |
| County Boundary | Interstate | Railroad |
| Address Numbers | NC | |



1 inch = 188 feet ⁵⁵

Preliminary Soils Evaluation
 ~4.37 acres
 Pump Station Road - Harnett county



Legend



Areas contain soils with 30 inches or more of useable material and have potential for conventional, modified conventional, LPP or ultra-shallow conventional septic systems.

There may be inclusion of soils 24-29 inches to a restrictive horizon that will have potential for LPP septic systems.

US

Unsuitable Areas or Areas Not Evaluated

*Preliminary Soils Evaluation

*Not a Survey (sketched from public records).

*Septic system setbacks listed below for new lots.

- 1) 10' from property lines.
- 2) 100' from wells for primary and repair systems.
- 3) 50' from surface waters (streams, ponds, lakes).

*Any mechanical disturbances such as grading, cutting and filling of the suitable soil areas can render areas unsuitable for future septic areas.

*See accompanying report for additional information.

*Base map sketched from preliminary plat map

*Due to Soil Variability, Adams Soil Consulting cannot guarantee that the areas shown as suitable will be permitted by the local Health Department.

*A more detailed soil evaluation should be performed prior to further subdivision.

$$1" = 125'$$



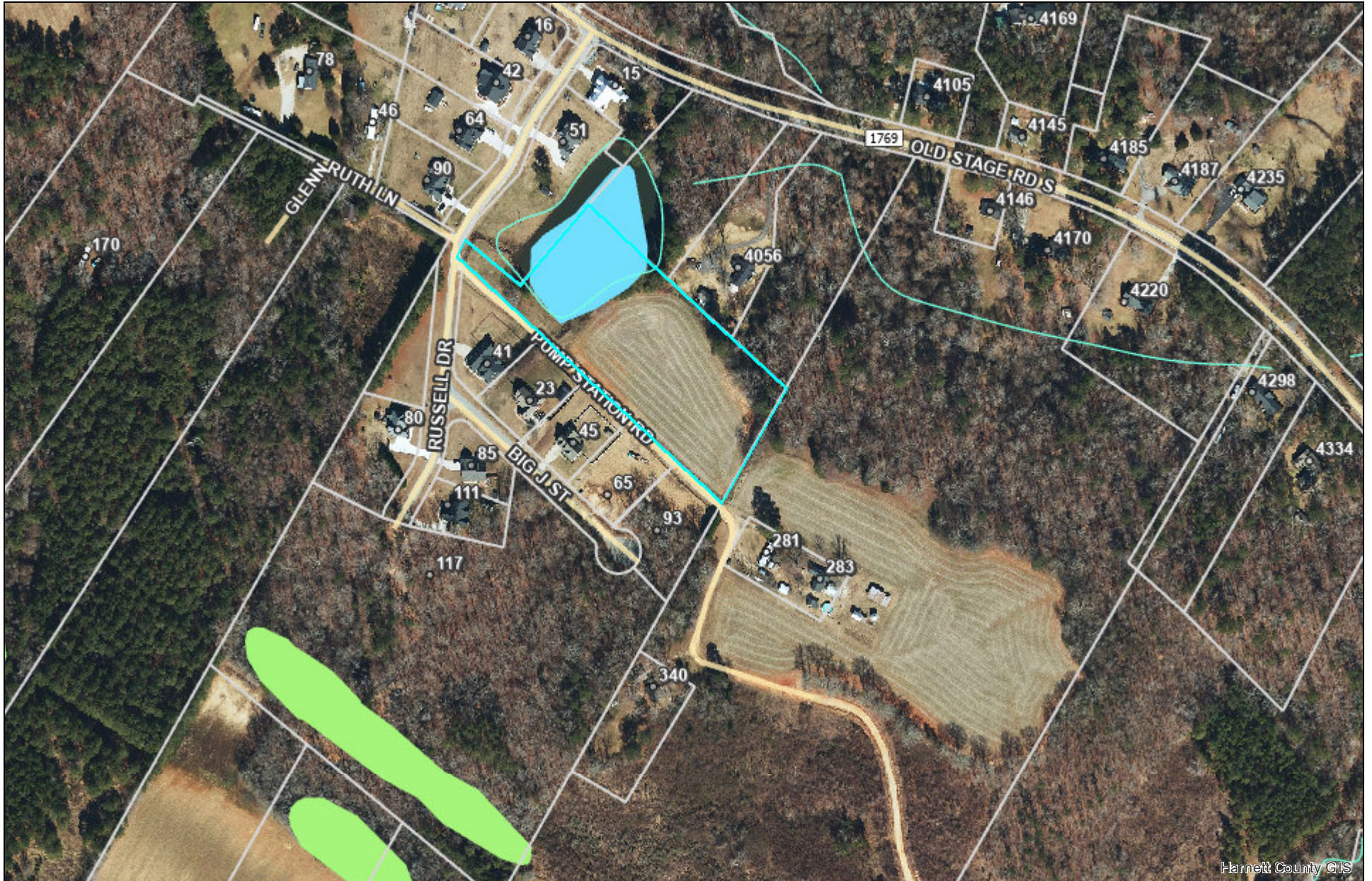
*Not a Survey
 (sketched from public records)



Adams
 Soil Consulting
 919-414-6761
 Project #1446

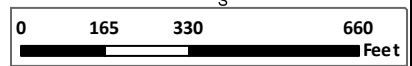
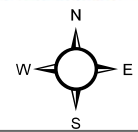
Harnett GIS

NOT FOR LEGAL USE



Harnett County GIS

- | | | |
|-------------------------------|--------------------|-------------------|
| Surrounding County Boundaries | Airport | Road Centerlines |
| City Limits | Major Roads | Railroad |
| County Boundary | Interstate | Parcels |
| Address Numbers | NC | Cape Fear River |
| | US | Blue Line Streams |



GIS/E-911 Addressing

June 12, 2023

1 inch = 376 feet ⁵⁷

Prepared By: Lynn A. Matthews
Matthews Law Group, P.C.
1103 W Cumberland Street
Dunn, NC 28334

NORTH CAROLINA

ROAD MAINTENANCE AGREEMENT

HARNETT COUNTY

THIS AGREEMENT is made this the ____ day of October, 2023, by **JSJ PROPERTY SERVICES, LLC** of Harnett County, North Carolina, hereinafter referred to as "Owner";

WITNESSETH:

WHEREAS, the Owner holds title to a certain tract of land as recorded in Deed Book 4156, Page 501 and as shown on that Map recorded in Map Number 2023, Page _____, Harnett County Registry. Said lots are adjacent to that 60' foot private drive identified as Pump Station Road, Erwin, Harnett County, North Carolina, which private drive is shown on that duly recorded map recorded in Map Book 2023, Page _____, Harnett County Registry (the "Private Drive" or "Private Road").

IT IS MUTUALLY AGREED as follows:

1. Said Roadway shall be maintained by the Owner and its successors in title to the properties described in the preambles until such time as the State of North Carolina agrees to take over and maintain the streets within the subdivision.

2. The undersigned Owner agrees that it is its intention to maintain said Roadway as a private roadway for the mutual use and benefit of the Owner and its successors in title.

3. In furtherance of the mutual objective, the undersigned hereby agrees to the obligations herein set forth, as running with the land, and binding on it, its successors and assigns.

4. The Owner and its successors in title agree to be responsible for their pro rata share of the annual cost of maintaining said private roadway in a fashion suitable for vehicular traffic and in as good as condition as presently exists on said Roadway.

5. In the event Owner sells any or all of the lots, then the successors in title shall be equally responsible for the annual cost of maintaining said private roadway in a fashion suitable for vehicular traffic and in as good as condition as presently exists on said Roadway.

IN WITNESS WHEREOF the undersigned owners have set their hand and seal the day and year first above written.

JSJ PROPERTY SERVICES, LLC

By: _____
Tracy L. Johnson, Manager

NORTH CAROLINA

HARNETT COUNTY

I, _____, a Notary Public, do hereby certify that **Tracy L. Johnson, Manager of JSJ Property Services LLC** a North Carolina limited liability company, personally appeared before me this day and acknowledged the execution of the foregoing instrument on behalf of said company.

Witness my hand and seal this ____ day of October, 2023.

Notary Public
My Commission Expires: _____

Erwin Board of Commissioners

REQUEST FOR CONSIDERATION

To: The Honorable Mayor and Board of Commissioners

From: Snow Bowden, Town Manager

Date: October 23, 2023

Subject: LED Signs Text Amendment

Town Staff has prepared a proposed text amendment to our subdivision memo. At the moment, any subdivision that creates three (3) or more lots is automatically considered a major subdivision. If you have to extend any infrastructure (ie. water and/or sewer lines) or build a new road the proposed subdivision automatically becomes a major subdivision. Minor subdivisions are considered subdivisions that are three (3) lots or less that front a town-maintained or state-maintained road. This proposed text amendment would allow for the creation of ten (10) lots if they all front a town-maintained road. The proposed text amendment does not increase the number of lots for any roads that front a North Carolina Department of Transportation (NCDOT) road. The reasoning behind this is in order to connect a driveway to an NCDOT road you have to obtain an NCDOT driveway permit. NCDOT has been requiring shared driveways as of late. I think we can address this when we start looking at our entire Town Code update.

Current language:

Changeable copy, electronic reader board, and LED signs are permitted only in the B-2 Highway Business Zoning District and for churches, schools, community centers, and other public institutional uses under the following conditions:

- a. If changeable copy, electronic reader board, or LED (also referred to as "electronic display") signs are utilized as a part of a permitted freestanding sign, then the total electronic display area of such freestanding sign shall be a minimum of 30 percent and a maximum of 50 percent changeable copy, electronic reader board, or LED signage.
- b. Electronic reader board or LED signs that display anything other than the time and temperature shall not change messages or images more often than every ten seconds.
- c. Electronic display signs shall be comparable in composition, durability, and workmanship to the existing sign.
- d. Display lighting shall be shielded, or dimmed so as to prevent direct rays of light from being cast into a residential area or district and/or vehicles approaching on a public right-of-way from any direction.

Recommended change

Changeable copy, electronic reader board, and LED signs are permitted ~~only~~ in the B-2 Highway Business Zoning District, **Central Business District (CB) and**, for churches, schools, community centers, and other public institutional uses under the following conditions:

- a. If changeable copy, electronic reader board, or LED (also referred to as "electronic display") signs are utilized as a part of a permitted freestanding sign, then the total electronic display area of such freestanding sign shall be a minimum of 30 percent and a maximum of 50 percent changeable copy, electronic reader board, or LED signage.
- b. Electronic reader board or LED signs that display anything other than the time and temperature shall not change messages or images more often than every ten seconds.
- c. Electronic display signs shall be comparable in composition, durability, and workmanship to the existing sign.
- d. Display lighting shall be shielded, or dimmed so as to prevent direct rays of light from being cast into a residential area or district and/or vehicles approaching on a public right-of-way from any direction.

Erwin Board of Commissioners

REQUEST FOR CONSIDERATION

To: The Honorable Mayor and Board of Commissioners

From: Snow Bowden, Town Manager

Date: October 23, 2023

Subject: Subdivision Text Amendment

Town Staff has prepared a proposed text amendment to our subdivision memo. At the moment, any subdivision that creates three (3) or more lots is automatically considered a major subdivision. If you have to extend any infrastructure (ie. water and/or sewer lines) or build a new road the proposed subdivision automatically becomes a major subdivision. Minor subdivisions are considered subdivisions that are three (3) lots or less that front a town-maintained or state-maintained road. This proposed text amendment would allow for the creation of ten (10) lots if they all front a town-maintained road. The proposed text amendment does not increase the number of lots for any roads that front a North Carolina Department of Transportation (NCDOT) road. The reasoning behind this is in order to connect a driveway to an NCDOT road you have to obtain an NCDOT driveway permit. NCDOT has been requiring shared driveways as of late. I think we can address this when we start looking at our entire Town Code update.

Sec. 30-75. Procedure for review of major or minor subdivisions.

- (a) All subdivisions shall be considered major subdivisions except those defined as minor subdivisions in this section. Major subdivisions shall be reviewed in accordance with the procedures in sections 30-77 through 30-80. Minor subdivisions shall be reviewed in accordance with the provisions in section 30-76.
- (b) A minor subdivision is defined as one involving no new public or private streets or roads, or right-of-way dedication, and no utility extension.
- (c) Minor subdivisions shall be further defined as:
 - (1) Any subdivision which creates a maximum of three lots ten lots each of which front on a state- or ~~town-maintained~~ road; or ten lots each of which front a town maintained road.
 - (2) Any subdivision which allows a maximum of three lots to be created on a 50-foot easement abutting a state- or town-maintained road which meets the following requirements:
 - a. Each lot shall meet the minimum zoning requirements in regards to lot size, use and frontage at time of the subdivision.
 - b. An easement cannot be created off of an existing easement or privately maintained road. In addition, all new easements must have a road maintenance agreement approved and recorded alongside the subdivision plat.
 - c. Easements must be no longer than 1,000 feet in length total.
 - d. Accessways for minor subdivisions which allow more than one lot to be created on any easement, shall be required to meet the following road construction standards:
 - 1. There shall be an access travel way width of a minimum of 20 feet.
 - 2. The travel way shall extend the entire length of the easement.
 - 3. The travel way shall be clear of all obstruction and debris.
 - 4. The travel way shall be compacted and layered with three inches of aggregate base course or improved according to the NCDOT Subdivision Manual, latest edition.

(Code 1977, § 9-3027; Ord. of 2-3-1994; Amd. of 5-7-2009; Amd. of 2-3-2011)